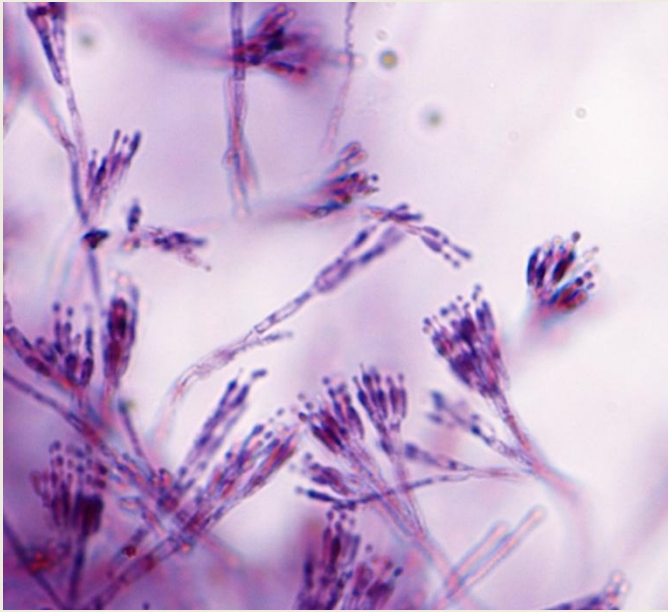


1. A single filament of a mold is called a _____, while The total mass of hyphae is termed the _____.

A. mycelium; hyphae

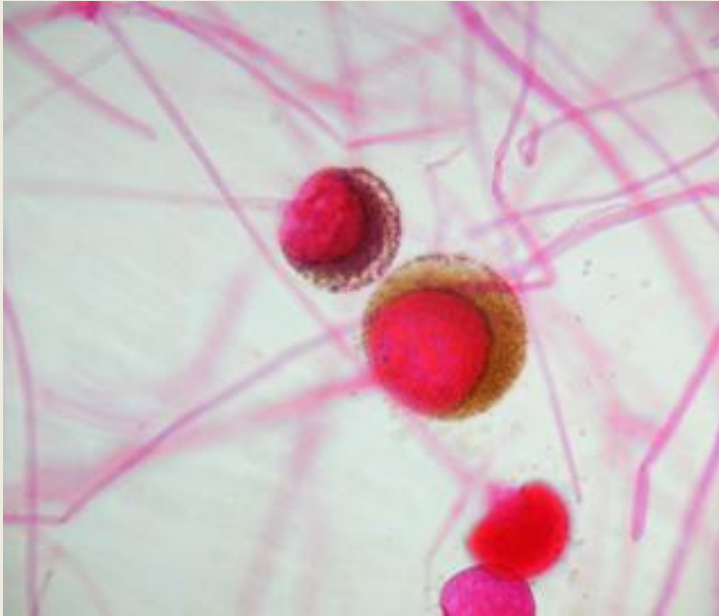
B. hyphae; mycelium

C. conidiophore; conidiospore



2. These spores are called:

- A. arthrospores
- B. sporangiospores
- C. conidiospores



3. These spores are called:

Multiple Choice (ans)

- A. arthrospores
- B. sporangiospores
- C. conidiospores

4. Fungi that grow as a mold outside the body but grow as a yeast-like form inside the body are called:

A. dimorphic fungi

B. dermatophytes

C. mycoplasmas

5. Produces hyphae and tuberculate macroconidia in soil contaminated with bird or bat droppings but grows as an encapsulated yeast in the lungs. This best describes:

A. Coccidioides immitis.

B. Blastomyces dermatitidis.

C. Histoplasma capsulatum.

6. Molds that cause superficial mycoses of the hair, skin, and nails and utilize the protein keratin are called:

- A. dimorphic fungi
- B. dermatophytes
- C. mycoplasmas